

Unitree B2

Go Beyond The Limits

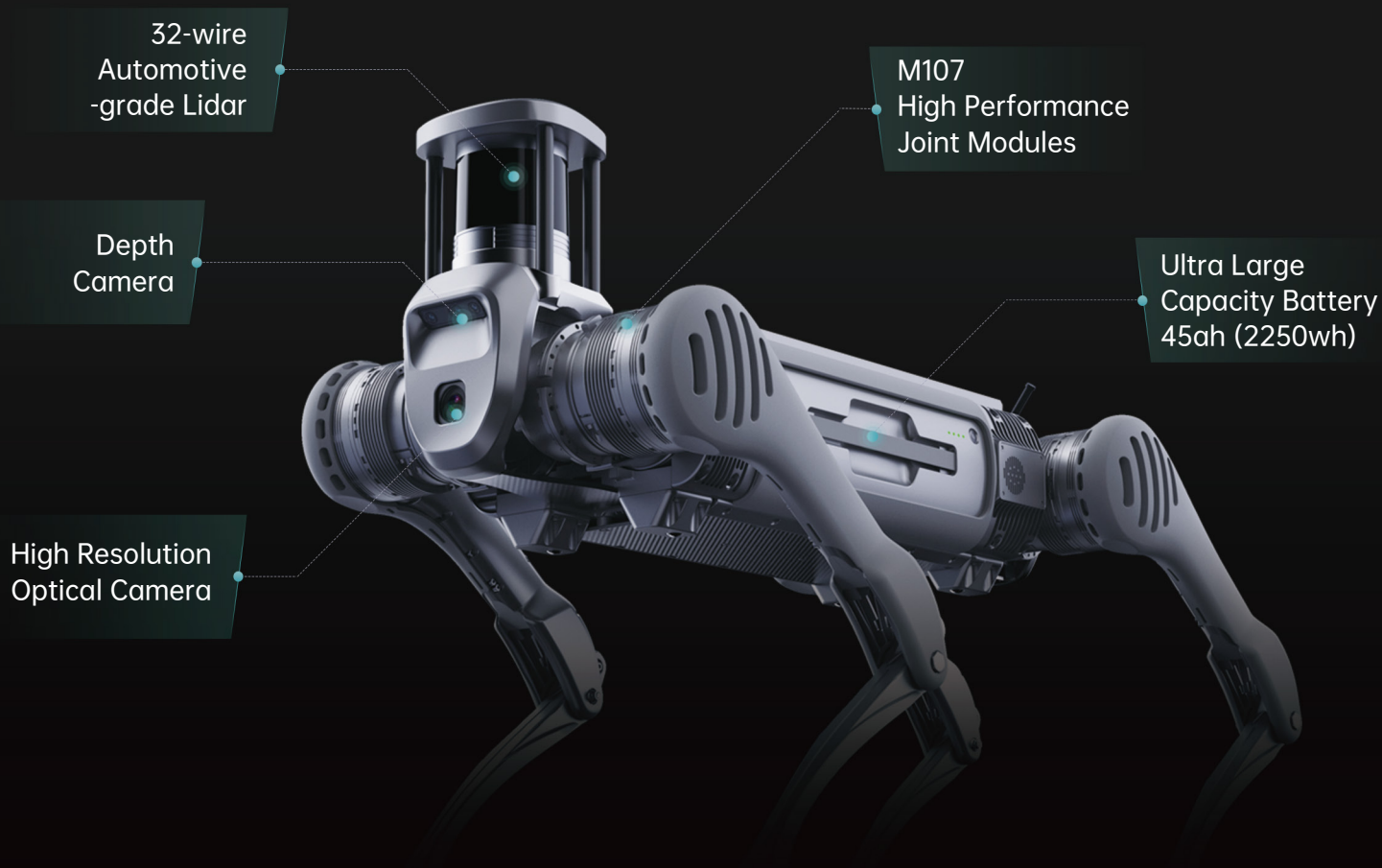
Lead The Industry Application



www.unitree.com

Full-scene Adaptation, All-around Robot

The comprehensive performance in terms of load, endurance, motion capability and speed is two to three times that of existing quadruped robots worldwide!



> 6m/s ^[1]

Max Running Speed

About 360N.m

Max Joint Torque

> 1.6m

Longest Jump Distance

Max 120kg

(standing load)

> 40kg

(continuous walking load)

Ultra Load

Max 40cm

(obstacle crossing)

> 45°

(slope angle)

Max Walking Capacity

> 5h

(continuous walking without load)

> 4h

(20kg load continuous walking)

Ultra Long Endurance

The Ubiquitous All-around Assistant

Leading Industrial Intelligence in All Scenarios.



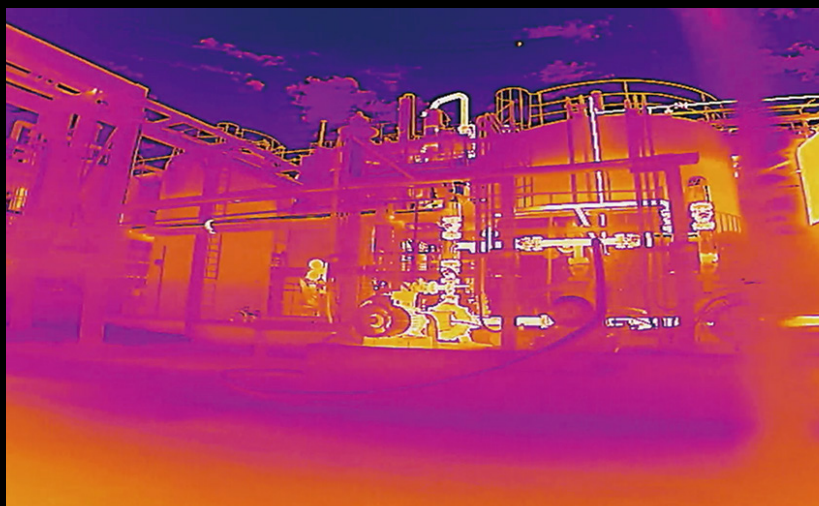
Power Inspection

Intelligent Power Solutions
Industry Application Leader



Emergency Rescue

Working on all-terrain like long
stairs, rock piles, steep slopes,
etc.



Industrial Inspection

Infrared Scanning
3D Mapping
Optimized environmental perception



01 All-rounded to Cope with A Variety of Environments

Excellent terrain adaptability to ensure stable travel on slippery or uneven surfaces.



02 Climbing Stairs As If They Were Flat

Effortlessly tackling steps of over 40cm.



03 100% Increase in Sustained Load 200% Increase in Endurance

100% increase in continuous walking with load greater than 40kg; continuous walking with 20kg load can last for greater than 4 hours with over 15km mileage.



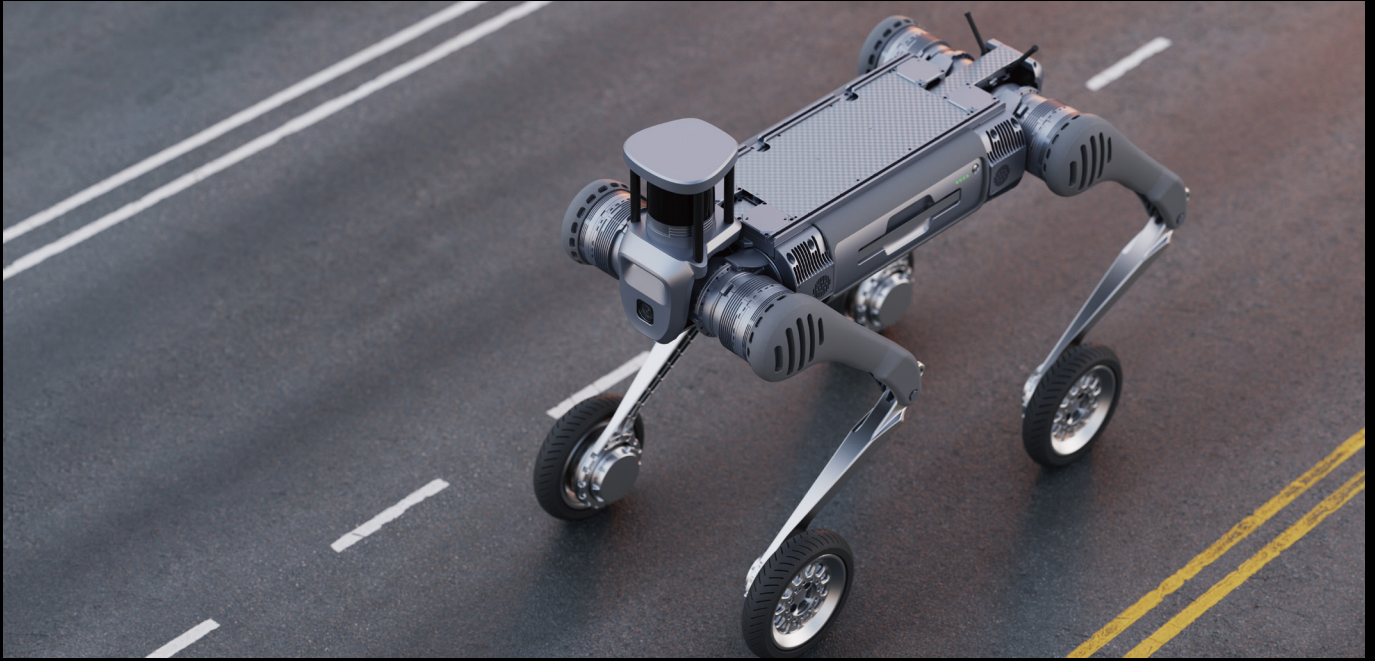
04 170% Increase in Joint Performance with 360 N.m of Torque

Extreme performance provides greater flexibility and stability for industrial operations.

Wheeled and Legged forms

Breaking Through Endurance Limitations

Innovative structural design of the B2 realizes switching between legged and wheeled forms (optional).



Plug-in battery

Stable and Reliable Autonomous Charging

B2 battery supports quick change and also supports autonomous charging solutions (optional), suitable for a wide range of solutions.



Parameters

Size(Standing)	1098mm×450mm×645mm
Size(Lying Prone)	880mm×460mm×330mm
Weight	≈60kg Total weight (battery included)
Battery Performance	Battery capacity 45Ah (2250Wh) , voltage 58V
Endurance Ability	Battery life 4-6h Walking without load > 5h, and the mileage > 20km Walking with 20kg load > 4h, and the mileage> 15km
Wheeled Foot	Optional
Load(Standing)	Max. 120kg
Load(Walking)	> 40kg
Continuous Stair Climbing	Stairs of 20~25cm
Single Obstacle Crossing	Climb up and down stairs of 40cm in forward direction
Climbing Angle	> 45°
Operating Temperature	-20°C ~55°C
Running Speed	> 6m/s [1]
Ditch Jumping Width	0.5~1.2m
Max Jump Distance	> 1.6m
Ingress Protection	IP67
Control and Perception	intel Core i5×1, intel Core i7×3, Nvidia Jetson Orin NX×1 (Varies with different configurations)
Sensing Sensor	(optional) 3D LiDAR×1+ Depth camera×2+ Optical camera×2(Varies with different configurations)
Interface	1000M-Base-Ethernet×4, USB3.0×4, 12V×4, 5V×1, 24V×4, BAT×1

*[1]: [1]: Implemented in a special configuration. Actually, speed limits will be set for safety.

*Warm reminder: some functions require manual operation or secondary development, and may vary with different configurations.

*Note that the above parameters may vary in application under different business scenarios, parameter configurations of different models, etc. Please refer to the actual situation.

Unitree

Web: www.unitree.com
Tel: +86 187 6713 8485
Email: laikago@unitree.cc



Follow us@Unitree Robotics